

Insight[©] 4 Service Pack 6

View

User Reference

March 2016

CAE Flightscape
1135 Innovation Drive
Ottawa, Ontario, Canada
K2K 3G7

www.flightscape.com

Copyright © 2016 CAE Inc.



Contents

1.0 INTRODUCTION.....	1
1.1 INSTALLING AND UNINSTALLING INSIGHT® VIEW	1
1.1.1 <i>Installing Insight® View</i>	1
1.1.2 <i>Uninstalling Insight® View</i>	2
1.1.3 <i>Adding or Removing Insight® View Components</i>	2
1.2 RECOMMENDED SYSTEM REQUIREMENTS	3
1.3 FLIGHTSCAPE SUPPORT	4
2.0 EXPLORING INSIGHT® VIEW	5
2.1 MAIN INTERFACE	5
2.1.1 <i>Main Menu and Toolbar</i>	6
2.1.2 <i>Main Window</i>	8
2.1.3 <i>Status Bar</i>	8
2.2 OPENING AN INSIGHT® VIEW FILE.....	9
2.3 EXITING INSIGHT® VIEW	9
2.4 OPTIONS	10
2.4.1 <i>Graphics</i>	10
2.5 PLAYBACK CONTROL	12
2.5.1 <i>Time Buttons</i>	12
2.5.2 <i>Time Slider</i>	13
2.6 KEYBOARD SHORTCUTS	14

1.0 Introduction

Insight®|View is a freely available software application for viewing 3D flight animations produced using Insight®|Animation. Insight®|View allows playback of animations at full native display resolutions with smaller file sizes than frame based recording formats.

Insight®|View can display unlimited aircraft, high resolution terrain and complex cockpit instrumentation, providing accurate replay and visualization of flight data.

1.1 Installing and Uninstalling Insight®|View

This product does not require a license.

1.1.1 Installing Insight®|View

To install Insight®|View

1. Close all applications currently running.
2. If installing from CD-ROM,
 - Insert the Insight Installation CD in the CD-ROM drive and click on Insight®|View.
 - If the Insight®|View Setup Wizard does not start automatically, click the Start button on the Windows taskbar, and click Run. Type D:\Setup, where D is the letter that corresponds to the CD-ROM drive.If installing from a downloaded .exe file
 - Double click the .exe file
3. Follow the instructions in the Insight®|View Installer Wizard.
4. Restart the computer if necessary.

Note:

Insight®|View is typically installed under "C:\Program Files (x86)\Flightscape" where C is the letter that corresponds to the SystemDrive, the drive on which the Windows® operating system was installed.

1.1.2 Uninstalling Insight®|View

To uninstall Insight®|View

Option 1

- Click Start on the Windows taskbar.
- Click **Control Panel** → **Add/Remove Programs**.
- Choose Insight®|View from the list of programs and click Remove.
- Follow the instructions to remove Insight®|View from your system.

Option 2

- Insert the Insight®|View CD in the CD-ROM drive.
- Choose the Remove option from the Insight®|View Setup Wizard.
- Follow the instructions in the Insight®|View Setup Wizard.

Note:

All files and folders that have been changed while working with the program will not be removed from your system's Insight®|View install directory during the uninstall process.

1.1.3 Adding or Removing Insight®|View Components

To modify, repair or remove Insight®|View components

- Click Start on the Windows taskbar.
- Click **Control Panel** → **Add/Remove Programs**.
- Choose Insight®|View from the list of programs and click Change.
- Follow the instructions in the Insight®|View Installer Wizard.

1.2 Recommended System Requirements

Desktop Item	Minimum Requirement	Recommended Requirement
Processor	Intel® Core™ i5 Processor	Intel® Core™ i7 Processor
Memory	4 GB RAM	16 GB RAM
Hard Drive	250 GB Hard Drive	1 TB Hard Drive
DVD	DVD-RW Drive	Blu-Ray RW Drive
Graphics Card	512 MB NVIDIA GeForce GTX 600 series (or higher)	2048 MB NVIDIA GeForce GTX 700 series (or higher)
	Note: Integrated (on board) or workstation (professional) graphics adapters are not supported	
Display	1 x 20" Flat Panel Displays	2 x 20" (or larger) Flat Panel Displays
Operating System*	Windows 7 (64-bit) or Windows 8 (64-bit)	Windows 7 (64-bit) or Windows 8 (64-bit)

Laptop Item	Minimum Requirement	Recommended Requirement
Processor	Intel® Core™ i5 Processor	Intel® Core™ i7 Processor
Memory	4 GB RAM	8 GB RAM
Hard Drive	1 TB Hard Drive	2 TB Hard Drive
DVD	DVD-RW Drive	Blu-Ray RW Drive
Graphics Card	512 MB NVIDIA GeForce GTX 600 series (or higher)	2048 MB NVIDIA GeForce GTX 700 series (or higher)
	Note: Integrated (on board) or workstation (professional) graphics adapters are not supported	
Display	15" Display	17" Display
Operating System*	Windows 7 (64-bit) or Windows 8 (64-bit)	Windows 7 (64-bit) or Windows 8 (64-bit)

* English Language version only. Windows 8.1 is a minor update to Windows 8 but has not yet been tested with Insight.

1.3 Flightscape Support

Flightscape's customer support program – 360Insight™ – a web-based portal available through www.flightscape.com was initially launched with Insight 4, SP1 and continues to be enhanced in order to improve our products and service offerings for you.

360Insight™ offers customers 24/7 access to support resources, including an online issue ticketing system, tutorials, software updates, and documentation.

The online ticketing system requires a personal username and password which may be obtained from Support via an email request to insightsupport@cae.com. When you log in, your account will display any outstanding support issues you may have logged. You may submit issues, observations, and feature requests.

The Flightscape web site (www.flightscape.com) also provides a solutions database for known issues which you can search for suggestions on how to apply workarounds.

If you need to contact Flightscape directly:

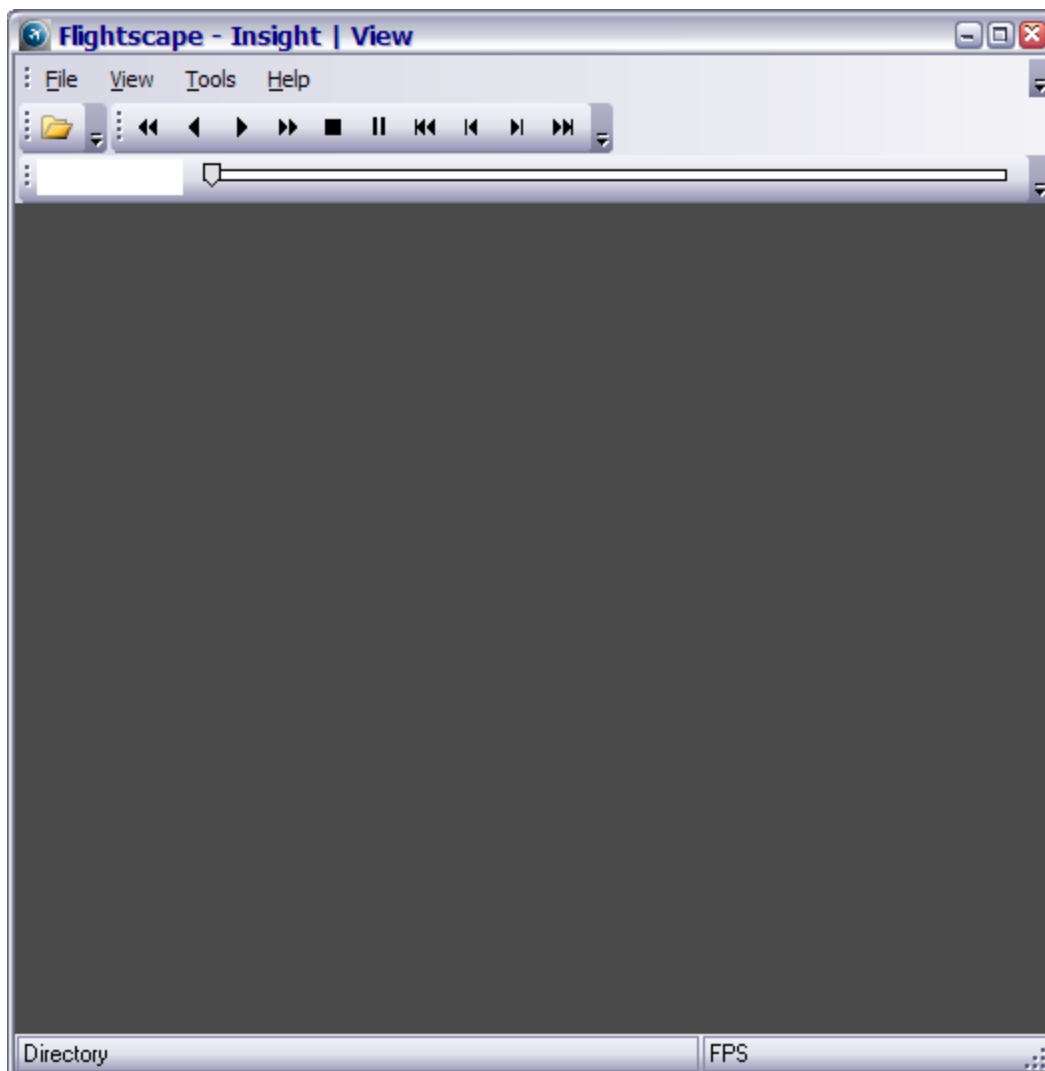
24 Hour Support: +1 (613) 287-0777
Fax: +1 (613) 225-0098
E-mail: insightsupport@cae.com

2.0 Exploring Insight[®] | View

The Insight[®] | View interface consists of three panes:

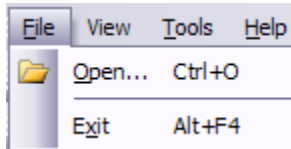
1. Main Menu and Toolbar
2. Main Window
3. Status Bar

2.1 Main Interface



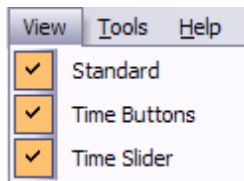
2.1.1 Main Menu and Toolbar

2.1.1.1 File Menu



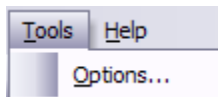
- *Open* – Allows you to select an Insight View (ISV) File to open.
- *Exit* – Closes the Insight[®]|View application.

2.1.1.2 View Menu



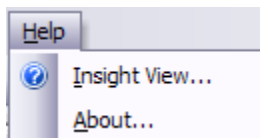
- Allows you to personalize the look of your toolbar by hiding/displaying the existing toolbar items, such as:
 - Standard
 - [Time Buttons](#)
 - [Time Slider](#)

2.1.1.3 Tools Menu



- *Options* – Opens the Options Dialog, which is used to specify default settings.



2.1.1.4 Help Menu



- *Insight|View* – Gives access to the online help.
- *About* – Displays information about the current version of the Insight[®]|View software.

2.1.1.5 Toolbar Menu



- By default the Toolbar menu is positioned at the top of the main window.
- The icons located on this bar provide you with shortcuts to performing certain tasks.
- You can discover what each icon represents by hovering over it with the mouse cursor: a tool tip will then display its functionality.
- The Toolbar can be repositioned at the top of the screen by grabbing the toolbar handle  and moving it to the required location.
- The Toolbar is fully configurable (right click anywhere in the Toolbar area and select/deselect the Toolbar item that you would like to display/hide).
- Using the down arrow  you can add or remove buttons from your toolbar or reset it to the default settings.

2.1.2 Main Window



The main window displays the views, instruments, scene objects, texts, etc. contained in an animation.

2.1.3 Status Bar

The Status Bar is located at the bottom of the main window. Various types of information are displayed here. The Status Bar identifies current view file settings. It also displays the FPS (Frame Per Second) rate of the animation playback.

2.2 Opening an Insight[®]|View File

To open an Insight[®]|Viewfile


- Choose **File**→**Open**.
- Choose the drive and folder where the file is stored.
- Choose a Filename (A file with an .isv extension).
- Click **Open**.

To open an Insight[®]|Viewfile from the history list

Insight[®]|View retains the four most recently used files under the File menu. To reopen one of these files, simply click on the required file name from the list.

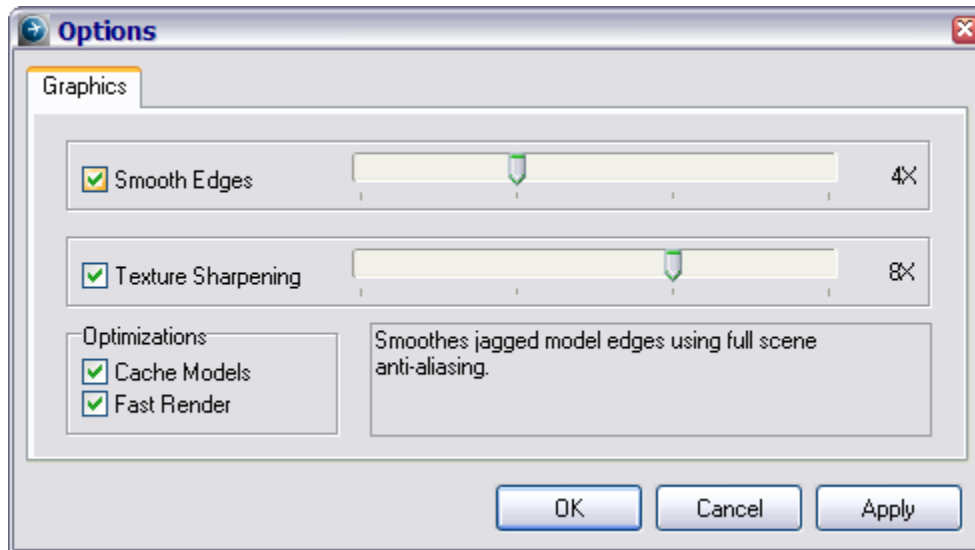
2.3 Exiting Insight[®]|View

To exit Insight[®]|View

- Choose **File**→**Exit**.
- Click the  button at the top right corner of the main form.

2.4 Options

2.4.1 Graphics



- Smooth Edges:* Smooths jagged edges on models using anti-aliasing. An alternate implementation of the smoothing algorithm is used for text and lines when the smoothing option is disabled. Even though 2x and 4x full scene anti-aliasing may be available when smoothing is enabled, 6x is recommended to reduce text and line quality degradation.
- Texture Sharpening:* Reduces texture blurring using anisotropic filtering.
- Cache Models:* Stores model rendering information in memory using display lists.
- Fast Render:* Optimizes the way model data is sent to the video card using vertex arrays. When it is enabled, transparency on colour scale surfaces is disabled, and no smoothing is used unless full scene anti-aliasing is enabled as well.

Insight®|View allows you to modify smoothing options if your graphics card supports multi-sample full scene anti-aliasing. Most of the relatively new graphics cards support this functionality.

If turning anti-aliasing on seems to have no effect on the smoothness of polygon edges, then check the display properties for your graphics card. For the application to be able to modify anti-aliasing levels, the anti-aliasing setting on the graphics card must be set to Application Preference.

Some older graphics cards use super-sampling instead of multi-sampling. For these graphics cards, the anti-aliasing settings need to be modified in the graphics card's display properties.

Note:

If smooth edges and/or texture sharpening levels are set higher than the video card can support they will be reduced accordingly.

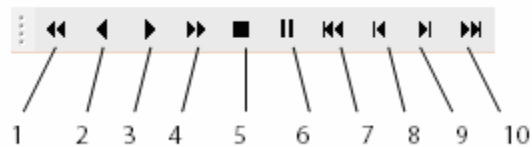
2.5 Playback Control

There are two toolbars (Time Buttons Toolbar and Time Slider Toolbar) available to control the playback of an animation.

2.5.1 Time Buttons

To display this toolbar:

- Click on the **View** menu and select the **Time Buttons** option.



1. **Fast Reverse x2, x4, x8, x16, ...**
2. **Play Reverse Real Time**
3. **Play Forward Real Time**
4. **Fast Forward x2, x4, x8, x16, ...**
5. **Stop**
6. **Pause**
7. **Go to Start of Data**
8. **Step Back**
9. **Step Forward**
10. **Go to End of Data**

2.5.2 Time Slider

To display this toolbar:

- Click on the **View** menu and select the **Time Slider** option.



11. Time Text Field

12. Time Slider Bar

- The Time Slider Bar can be used to pan through the animation data.
- By entering a time value in the Time Text Field and pressing the Enter key on the keyboard you can jump to a specific time in the data.

2.6 Keyboard Shortcuts

The keyboard can be used to control the playback of the animation. The keyboard functions are outlined here for reference.

Space	Play Start/Stop	,(<)	Reverse x1
		.(>)	Forward x1
		/	Single Step
→	Time Increase	↑	Speed Increase
←	Time Decrease	↓	Speed Decrease
Shift	←→↑↓		Fine Time/Speed