

Insight[©] 4 Service Pack 6 **ProView** User's Reference

March 2016

CAE Flightscape
1135 Innovation Drive
Ottawa, Ontario, Canada
K2K 3G7

www.flightscape.com

Copyright ©2016 CAE Inc.



Flightscape

1.0 INTRODUCTION.....	1
1.1 INSTALLING AND UNINSTALLING INSIGHT® PROVIEW	2
1.1.1 <i>Installing Insight® ProView</i>	2
1.1.2 <i>Uninstalling Insight® ProView</i>	3
1.1.3 <i>Adding or Removing Insight® ProView Components</i>	3
1.2 RECOMMENDED SYSTEM REQUIREMENTS.....	4
1.3 FLIGHTSCAPE SUPPORT	5
2.0 EXPLORING INSIGHT® PROVIEW	6
2.1 MAIN INTERFACE.....	6
2.1.1 <i>Main Menu and Toolbar</i>	7
2.1.2 <i>Main Window</i>	9
2.1.3 <i>Status Bar</i>	9
2.2 OPENING AN INSIGHT® PROVIEW FILE.....	10
2.3 EXITING INSIGHT® PROVIEW	11
2.4 OPTIONS.....	12
2.4.1 <i>Graphics</i>	12
2.5 PLAYBACK CONTROL.....	14
2.5.1 <i>Time Buttons</i>	14
2.5.2 <i>Time Slider</i>	15
2.6 KEYBOARD SHORTCUTS.....	16
2.7 MOUSE.....	17

1.0 Introduction

Insight[®] ProView is an interactive tool to view 3D flight animation. It allows the playback of animations at full native resolution with smaller file sizes than AVI.

Insight[®] ProView can display unlimited aircraft, high resolution terrain and complex cockpit instrumentation, providing accurate replay and visualization of data as it was recorded on the aircraft.

Animation, for the purpose of reconstructing an aircraft's flight, can be a very powerful tool. It can be a daunting task to inspect numerous print-outs and plots of data from an aircraft with hundreds or thousands of parameters, trying to keep the time aspect of the data in perspective. Insight[®] ProView puts this information together in an easy and interactive form.

1.1 Installing and Uninstalling Insight®|ProView

This product does not require a license.

1.1.1 Installing Insight®|ProView

To install Insight®|ProView

1. Close all applications currently running.
2. If installing from CD-ROM,
 - Insert the Insight Installation CD in the CD-ROM drive and click on Insight®|ProView.
 - If the Insight®|ProView Setup Wizard does not start automatically, click the Start button on the Windows taskbar, and click Run. Type D:\Setup, where D is the letter that corresponds to the CD-ROM drive.If installing from a downloaded .exe file
 - Double click the .exe file
3. Follow the instructions in the Insight®|ProView Installer Wizard.
4. Restart the computer if necessary.

Note:

Insight®|ProView is typically installed under "C:\Program Files (x86)\Flightscape" where C is the letter that corresponds to the SystemDrive, the drive on which the Windows® operating system was installed.

1.1.2 Uninstalling Insight®|ProView

To uninstall Insight®|ProView

Option 1

- Click Start on the Windows taskbar.
- Click Control Panel, then Add/Remove Programs (latter menu may be called Programs & Features).
- Choose Insight®|ProView from the list of programs and click Remove.
- Follow the instructions to remove Insight®|ProView from your system.

Option 2

- Insert the Insight®|ProView CD in the CD-ROM drive.
- Choose the Remove option from the Insight®|ProView Setup Wizard.
- Follow the instructions in the Insight®|ProView Setup Wizard.

Note:

All files and folders that have been changed while working with the program will not be removed from your system's Insight®|ProView install directory during the uninstall process.

1.1.3 Adding or Removing Insight®|ProView Components

To modify, repair or remove Insight®|ProView components

- Click Start on the Windows taskbar.
- Click Control Panel □ Add/Remove Programs.
- Choose Insight®|ProView from the list of programs and click Change.
- Follow the instructions in the Insight®|ProView Installer Wizard.

1.2 Recommended System Requirements

Desktop Item	Minimum Requirement	Recommended Requirement
Processor	Intel® Core™ i5 Processor	Intel® Core™ i7 Processor
Memory	4 GB RAM	16 GB RAM
Hard Drive	250 GB Hard Drive	1 TB Hard Drive
DVD	DVD-RW Drive	Blu-Ray RW Drive
Graphics Card	512 MB NVIDIA GeForce GTX 600 series (or higher)	2048 MB NVIDIA GeForce GTX 700 series (or higher)
	Note: Integrated (on board) or workstation (professional) graphics adapters are not supported	
Display	1 x 20" Flat Panel Displays	2 x 20" (or larger) Flat Panel Displays
Operating System*	Windows 7 (64-bit) or Windows 8 (64-bit)	Windows 7 (64-bit) or Windows 8 (64-bit)

Laptop Item	Minimum Requirement	Recommended Requirement
Processor	Intel® Core™ i5 Processor	Intel® Core™ i7 Processor
Memory	4 GB RAM	8 GB RAM
Hard Drive	1 TB Hard Drive	2 TB Hard Drive
DVD	DVD-RW Drive	Blu-Ray RW Drive
Graphics Card	512 MB NVIDIA GeForce GTX 600 series (or higher)	2048 MB NVIDIA GeForce GTX 700 series (or higher)
	Note: Integrated (on board) or workstation (professional) graphics adapters are not supported	
Display	15" Display	17" Display
Operating System*	Windows 7 (64-bit) or Windows 8 (64-bit)	Windows 7 (64-bit) or Windows 8 (64-bit)

* English Language version only. Windows 8.1 is a minor update to Windows 8 but has not yet been tested with Insight.

1.3 Flightscape Support

Flightscape's customer support program – 360Insight™ – a web-based portal available through www.flightscape.com was initially launched with Insight 4, SP1 and continues to be enhanced in order to improve our products and service offerings for you.

360Insight™ offers customers 24/7 access to support resources, including an online issue ticketing system, tutorials, software updates, and documentation.

The online ticketing system requires a personal username and password which may be obtained from Support via an email request to insightsupport@cae.com. When you log in, your account will display any outstanding support issues you may have logged. You may submit issues, observations, and feature requests.

The Flightscape web site (www.flightscape.com) also provides a solutions database for known issues which you can search for suggestions on how to apply workarounds.

If you need to contact Flightscape directly:

24 Hour Support: +1 (613) 287-0777

Fax: +1 (613) 225-0098

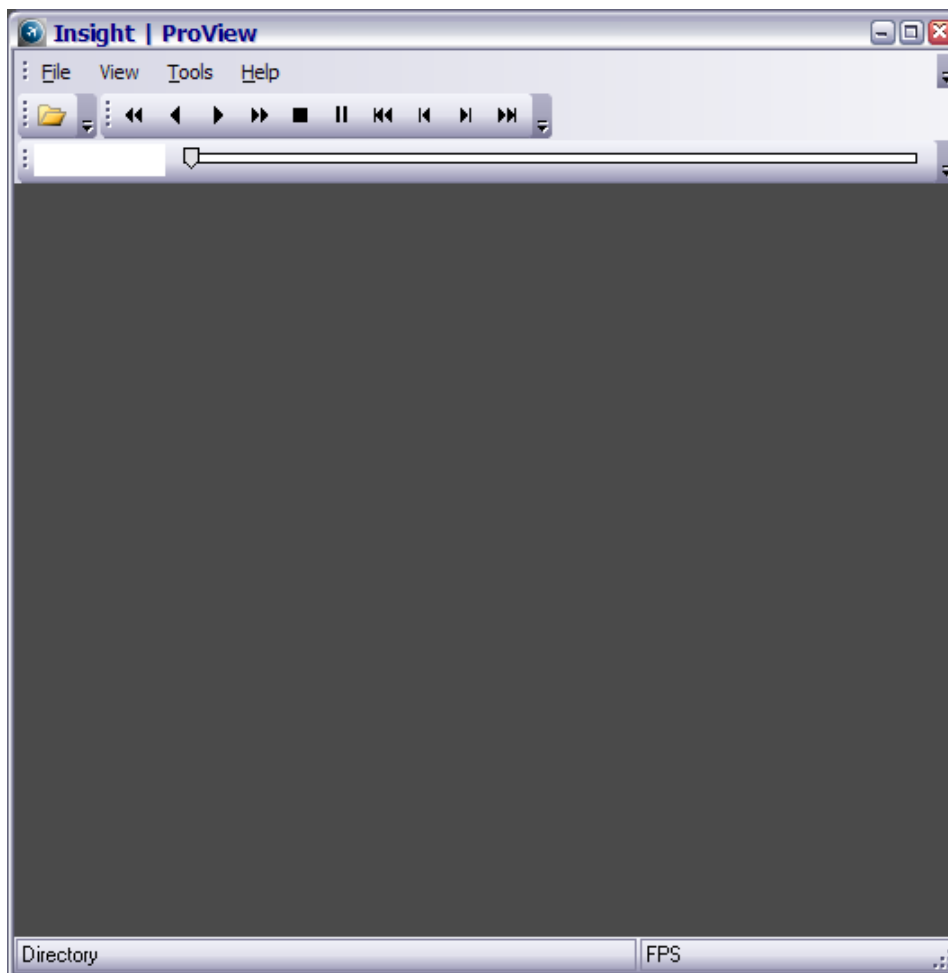
E-mail: insightsupport@cae.com

2.0 Exploring Insight[®] ProView

The Insight[®] ProView interface consists of three panes:

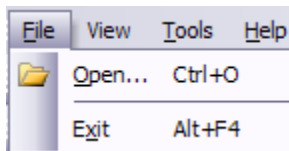
1. Main Menu and Toolbar
2. Main Window
3. Status Bar

2.1 Main Interface



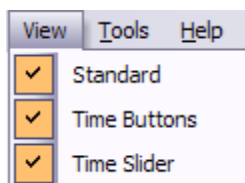
2.1.1 Main Menu and Toolbar

2.1.1.1 File Menu



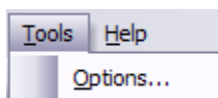
- *Open* – Allows you to select an Insight View (ISV) File to open.
- *Exit* – Closes the Insight® ProView application.

2.1.1.2 View Menu



- Allows you to personalize the look of your toolbar by hiding/displaying the existing toolbar items, such as:
 - Standard
 - Time Buttons
 - Time Slider

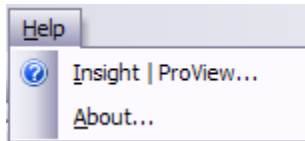
2.1.1.3 Tools Menu



- *Options* – Opens the [Options](#) Dialog, which is used to specify default settings.



2.1.1.4 Help Menu

- *Insight/ProView* – Gives access to the online help.
- *About* – Displays information about the current version of the Insight® ProView software.



2.1.1.5 Toolbar Menu



- By default the Toolbar menu is positioned at the top of the main window.
- The icons located on this bar provide you with shortcuts to performing certain tasks.
- You can discover what each icon represents by hovering over it with the mouse cursor: a tool tip will then display its functionality.
- The Toolbar can be repositioned at the top of the screen by grabbing the toolbar handle  and moving it to the required location.
- The Toolbar is fully configurable (right click anywhere in the Toolbar area and select/deselect the Toolbar item that you would like to display/hide).
- Using the down arrow  you can add or remove buttons from your toolbar or reset it to the default settings.

2.1.2 Main Window



The main window displays the views, instruments, scene objects, texts, etc. contained in an animation.

2.1.3 Status Bar

The Status Bar is located at the bottom of the main window. Various types of information are displayed here. The Status Bar identifies current view file settings. It also displays the FPS (Frame Per Second) rate of the animation playback.

2.2 Opening an Insight[®] ProView File

To open an Insight[®] ProView file


- Choose **File-Open**.
- Choose the drive and folder where the file is stored.
- Choose a Filename (with an .isv extension).
- Click **Open**.

To open an Insight[®] ProView file from the history list

Insight[®] ProView retains the four most recently used files under the File menu. To reopen one of these files, simply click on the required file name from the list.

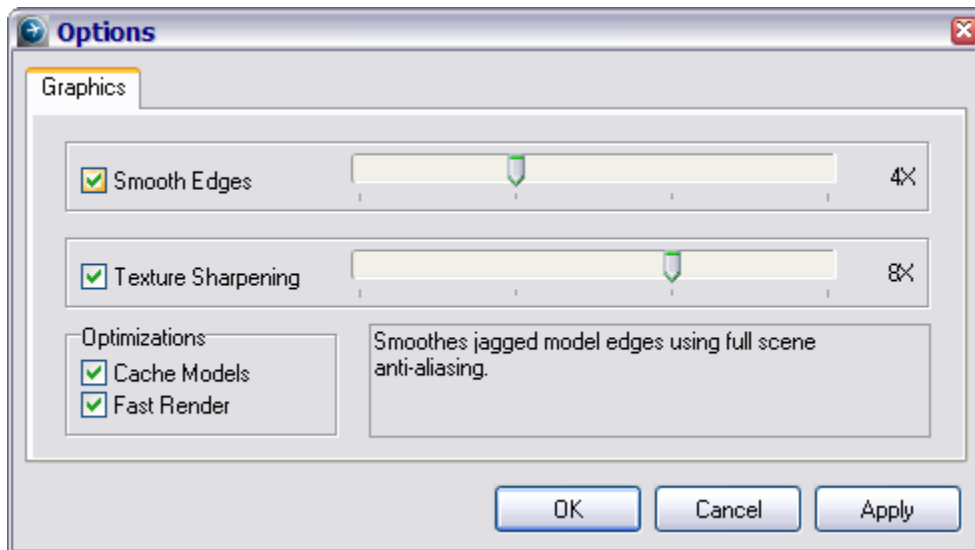
2.3 Exiting Insight[®] ProView

To exit Insight[®] ProView

- Choose **File-Exit**.
- Click the  button at the top right corner of the main form.

2.4 Options

2.4.1 Graphics



Smooth Edges: Smooths jagged edges on models using anti-aliasing. An alternate implementation of the smoothing algorithm is used for text and lines when the smoothing option is disabled. Even though 2x and 4x full scene anti-aliasing may be available when smoothing is enabled, 6x is recommended to reduce text and line quality degradation.

Texture Sharpening: Reduces texture blurring using anisotropic filtering.

Cache Models: Stores model rendering information in memory using display lists.

Fast Render: Optimizes the way model data is sent to the video card using vertex arrays. When it is enabled, transparency on colour scale surfaces is disabled, and no smoothing is used unless full scene anti-aliasing is enabled as well.

Insight[®] ProView allows you to modify smoothing options if your graphics card supports multi-sample full scene anti-aliasing. Most of the relatively new graphics cards support this functionality.

If turning anti-aliasing on seems to have no effect on the smoothness of polygon edges, then check the display properties for your graphics card. For the application to be able to modify anti-aliasing levels, the anti-aliasing setting on the graphics card must be set to Application Preference.

Some older graphics cards use super-sampling instead of multi-sampling. For these graphics cards, the anti-aliasing settings need to be modified in the graphics card's display properties.

Note: If smooth edges and/or texture sharpening levels are set higher than the video card can support they will be reduced accordingly.

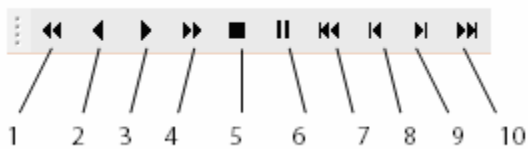
2.5 Playback Control

There are two toolbars (Time Buttons Toolbar and Time Slider Toolbar) available to control the playback of an animation.

2.5.1 Time Buttons

To display this toolbar:

- Click on the **View** menu and select the **Time Buttons** option.



1. Fast Reverse x2, x4, x8, x16, ...
2. Play Reverse Real Time
3. Play Forward Real Time
4. Fast Forward x2, x4, x8, x16, ...
5. Stop
6. Pause
7. Go to Start of Data
8. Step Back
9. Step Forward
10. Go to End of Data

2.5.2 Time Slider

To display this toolbar:

- Click on the **View** menu and select the **Time Slider** option.



11. Time Text Field

12. Time Slider Bar

- The Time Slider Bar can be used to pan through the animation data.
- By entering a time value in the Time Text Field and pressing the Enter key on the keyboard you can jump to a specific time in the data.

2.6 Keyboard Shortcuts

The keyboard can be used to toggle views, change objects, scenes, panels, and so on. The keyboard functions are outlined here for reference.

F1	Object	f	Path State
F2	Path	s	Subtitles On/Off
F3	Scene	a	Audio On/Off
F4	Panel	F	Smooth Path
F5	Chase Plane View	C	Smooth Camera
F6	Cockpit View	r	Start/Stop recording animation
F7	Ground View	R	Start/Stop recording animation (no prompt)
F8	Camera Reset	e	Script Start/Stop
F9	Camera		
F11	View		
Space	Play Start/Stop	,(<)	Reverse x1
		,(>)	Forward x1
		/	Single Step
→	Time Increase	↑	Speed Increase
←	Time Decrease	↓	Speed Decrease
Shift←→↑↓	Fine Time/Speed		

2.7 Mouse

The mouse can be used for either Camera or Translate Control. These are known as Position Control Modes. The default mode is Camera Control. Position Control Mode can be set by pressing “p” on the keyboard. In either mode, a Button 1 click will select the current window, and a Button 3 Click will enable a popup menu.

Camera Control

Button 1 Click	Horizontal/Vertical Position
Button 1 Double Click	Horizontal/Vertical Tilt
Button 2 Click	Radial Position
Button 2 Double Click	Zoom Angle

Translate Control

Button 1 Click	Translate X
Button 1 Double Click	Translate Y
Button 2 Click	Translate Z
Button 2 Double Click	Translate Time